

FAST CREW BOATS

THIRTY YEARS OF EXPERIENCE

Over the last thirty years **Chantier Allais** has built more than 300 crew boats. Customer demands have helped teach us how to design, build and equip vessels that will fully meet **YOUR** needs.

From this enormous experience has come the **SURFER** range of today. The archetypal fast, reliable and economic small crew boat, with each new model incorporating our most recent design and engineering advances.

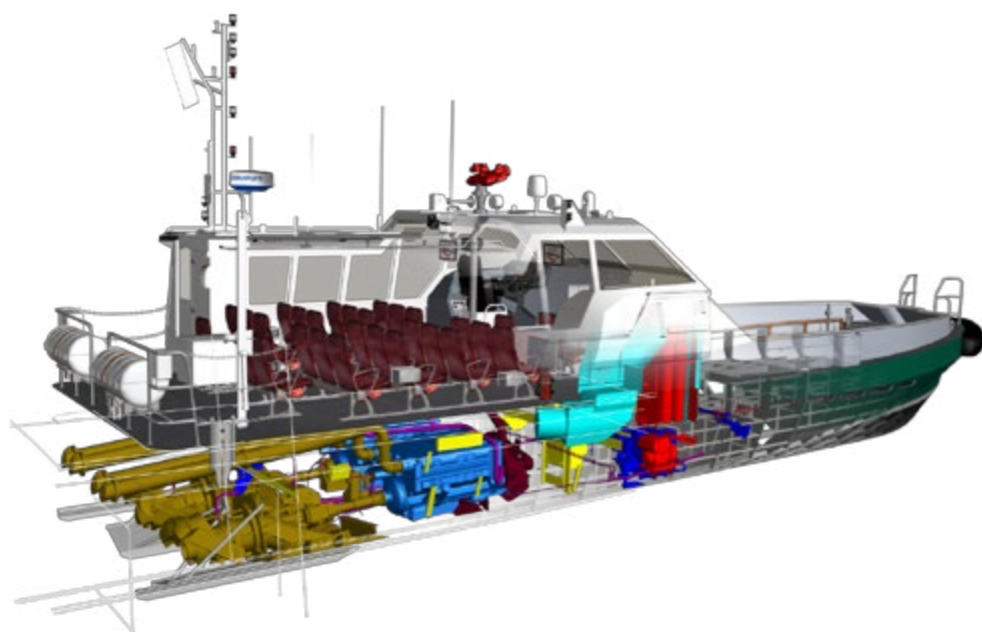
Listening to our customer's description of their working lives at sea has enabled us to incorporate specific design details in response, aimed at addressing particular issues. Hinges that allow an engine change without superstructure disassembly, for example, and shock-absorbing mountings for passenger and crew accommodation that reduce noise levels and vibration to improve comfort, introduced in 1993 and now used in all models, are just two examples of our innovative approach.

Our concentration and creativity is dedicated to customer satisfaction and this has been well repaid with our client's loyalty to us over the past 30 years.

The large number of crew boats built has given us a rare opportunity to standardise some components and to develop and master an enviable model of industrial production. This improves efficiency and helps to allow competitive pricing.

You can choose from a large range of fast crew boat designs, from 14 to 30 metres, all equipped with the latest technology and built to the highest quality.

In the end, a visit to our workshops will be the best way to convince you of our shipbuilding credentials.



Chantiers ALLAIS is the exclusive owner of all intellectual and industrial property rights for the following models: Surfer 14000, 1450, 1600, 1800, 1810, 18000, 19000, 200, Surfer Reefer, Surfer 2000, 220, 2200 and 2500.

SURFER 2500

A fast crew boat reference

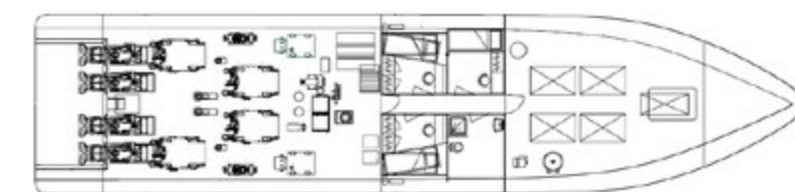
32-70 passengers



Now part of our crew-boat range the **SURFER 2500** was originally built to the particular requirements of a client for a vessel able to transport personnel in heavy sea conditions.

Adaptable for passenger loads between 32 and 70 the **2500** offers excellent comfort, with shock-absorbed accommodation, and a cruising speed of 26 knots provided by 4 Diesel engines powering water-jets.

Equipped with a fire-fighting pump delivering 600CM, remotely controlled from the wheelhouse, **2500** can also carry up to 15 tons of cargo on the 58 m2 fore-deck.



CONTACT

MSIS - Chantiers ALLAIS

Atelier Mécanique Nord - BP 80608

50106 Cherbourg Octeville Cedex - FRANCE

Tel: +33 (0)2 33 97 33 49 / +33 (0)6 80 85 96 42

Email: francois.allais@msmarine.fr

Website: www.chantiersallais.fr



REGISTRATION

Load line and stability certificates are delivered by BUREAU VERITAS



MAIN PARTICULARS

DIMENSIONS

Length overall:28.230 m
 Breadth overall:7.100 m
 Hull length:27.800 m
 Hull breadth:6.500 m
 Length at water line:23.950 m
 Draft:1.050 m
 Full loaded displacement:80 t

SPEED RANGE

Medium loaded craft max speed:30 knots
 Cruising speed
 - with 32 passengers:26 knots
 Consumption at cruising speed:600 l/h
 Consumption at maximum speed:720 l/h
 Fuel tank 4 x 1650:6600 l
 Range:280 Nm
 (at cruising speed with 32 passengers)

MACHINERY

Main engines trade mark:MAN
 Model:2842 LE 405
 Maximum output:4 x 900 hp
 Propeller type:4 x Water jet
 Trade mark:HAMILTON
 Model:HJ 403
 Generator:2 x 50 kVA

FRONT DECK

Designed to carry up to 15 tons, the front deck allows the use of standard basket for shipping and landing passengers.
 Deck area is 58 m² (11 m x 5 m 20).
 Deck strength is 500 kg per m².

All particulars believed to be correct but not guaranteed

APPROVALS

SURFER 2500 is classified BV Crew boat.

ACCOMMODATION

Fully air conditioned.
 EKNES brand passenger seats, model SUPER NOVA 1410, recliners.
 Cabin and wheelhouse mounted on resilient mount.
 One (32 passengers) or Two (70 passengers) restrooms with electric toilets.
 Stretcher berth for injured person.
 Crew accommodation: 2 x two-berth crew cabins, pilot cabin, restroom with electric toilets and shower, laundry.

FIRE FIGHTING EQUIPMENT

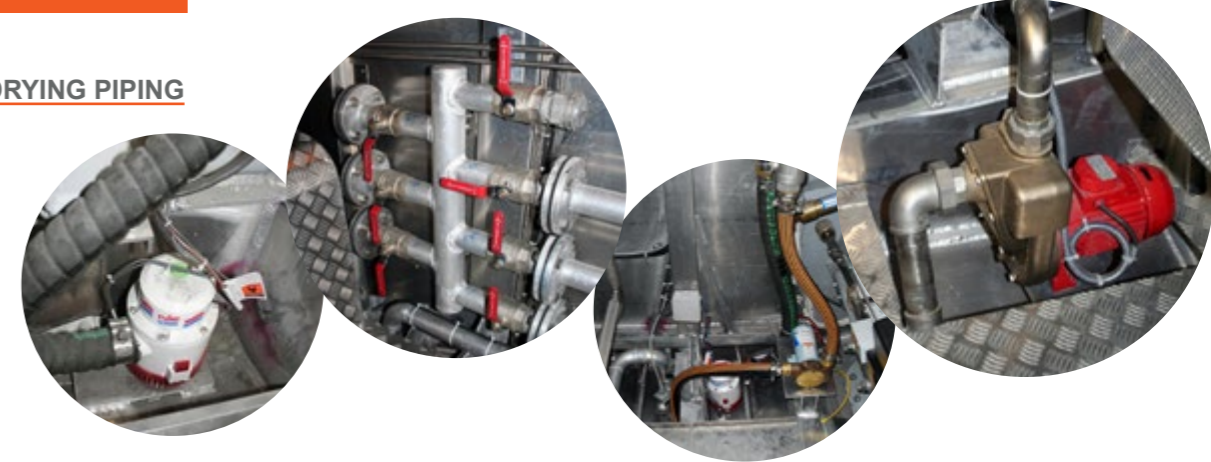
Fire-Fighting pump delivering 600 m³/h at 10 bar, driven by one main engine and operated remotely from the wheelhouse.

ELECTRONICS

Compas - rose 140 mm:1
 VHF SMDSM ICOM IC-GM 1600E:1
 VHF Sailor 6222 12V CC:2
 Radar FURUNO M1835:2
 GPS KODEN KGP-920:2
 Chart plotter SW 501i 5":1
 Echo sounder FURUNO LS6100 12 V 200 khz:1
 Transponder AIS TRANSAS M3 Class A:1
 Beacon EPIRB:1

SAFETY EQUIPMENT

BILGE PUMP AND DRYING PIPING



FIRE FIGHTING EQUIPMENT



SAFETY DROME

